

R. Br., new for S. ; Geelong, 1/96. *Festuca hookeriana*, F. v. M., new for S.W. ; Hawkesdale, 12/01. *Lepidosperma elatius*, Labill., new for S.W. ; Hawkesdale, 11/01. *Bellis perennis*, L., Portland district ; well established, 1894 and 11/01 ; perhaps not recorded as naturalized in Victoria. *Calocephalus citreus*, Lessing, new for N.E. ; Murray River, near Rutherglen, 12/00. *Calotis anthemoides*, F. v. M., new for S.W. ; Dunkeld, 11/01. *Poa lepida*, F. v. M., Coast Hills, Port Fairy, 11/01. *Chorizandra cymbaria*, R. Br., new for S.W. ; Hawkesdale, in Great Swamp, 12/01. *Eucalyptus dives*, Schauer, new for S.W. ; Grampians, 12/01. *Cyperus tenellus*, L., new for S.W. ; Hawkesdale, 11/01.

After the usual conversazione the meeting terminated.

DESCRIPTIONS OF SOME NEW MALLOPHAGA FROM MARSUPIALS.

BY S. A. LE SOUËF.

(Communicated by D. Le Souëf)

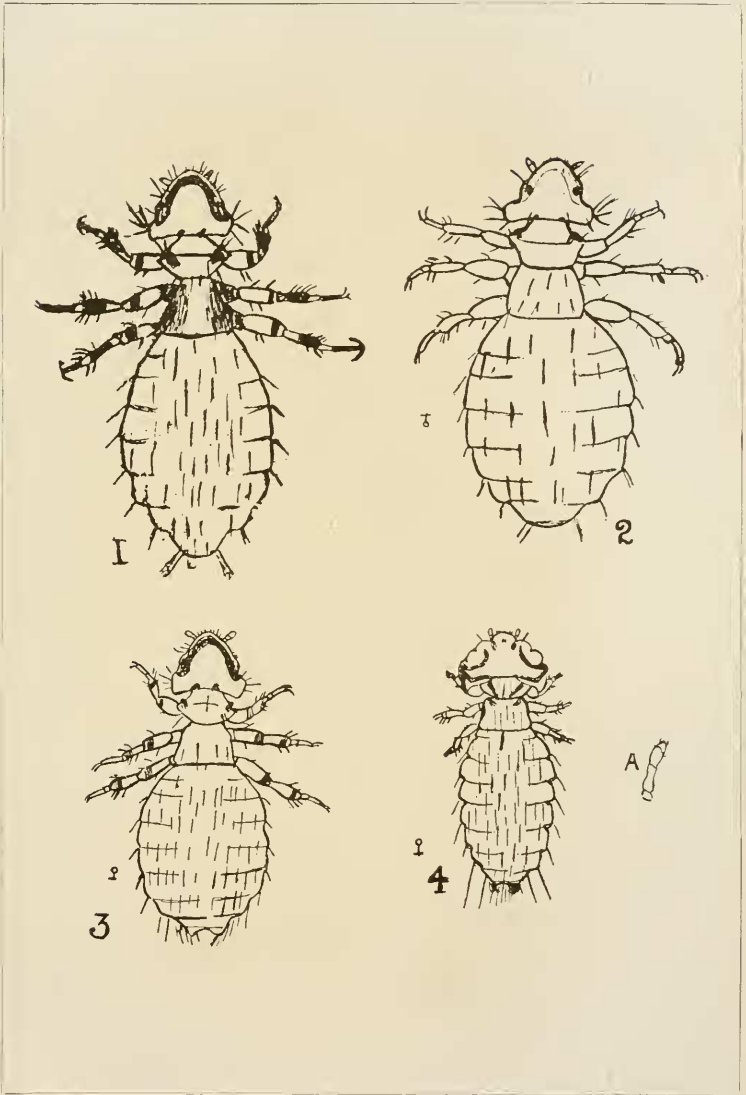
(Read before the Field Naturalists' Club of Victoria, 10th March, 1902.)

1. BOOPIA NOTA-FUSCA, found on Black Wallaby, *Macropus ualabatus*.

Dirty white, with light chestnut markings on upper parts of the body and legs ; head equilateral ; clypeus convex and smooth, with a broad chestnut band posteriorly extending to the base of a wide, shallow lateral sinus, in the anterior part of which the eyes are situated ; palpi with distal end a little enlarged ; antennæ capitate ; eyes large and convex ; temporal angles truncate ; a chestnut patch on each side of occiput ; prothorax elliptical, nearly as long as broad ; metathorax sub-conical and truncate ; legs long, first joint chestnut, second pale with chestnut ring distally, third chestnut on distal two-thirds ; first tarsal joint with a small nodule inferiorly ; second tarsal long and slightly curved, chestnut with numerous very fine hairs inferiorly ; ungues large, finely serrated on under surface ; abdomen ovate, the sides being wavy. Length 1.76 mm., breadth .80 mm.

2. BOOPIA BETTONGIA, found on Jerboa Kangaroo, *Bettongia rufescens*.

Pale yellowish-white and smooth ; clypeus convex ; palpi slightly clavate and long ; antennæ with last joint produced to a blunt point ; eyes slightly convex, with a strong spine growing out of the socket ; basal angles produced and rotundate ; base slightly concave ; prothorax large, broader than long, with three spines on the lateral margin, rotundate posteriorly ; metathorax quadrate, concave anteriorly and truncate posteriorly ; legs pale, second tarsal joint stout and curved, with a double serrated ridge inferiorly ; abdomen ovate, bluntly serrated laterally. Length 1.60 mm., breadth .67 mm.



S. A. LE SOUËF, Del.

Process Block. TRIUMPH ENG. CO.

NEW SPECIES OF MALLOPHAGA.

3. *BOOPIA MINUTA*, found on *Dorsalis* Wallaby, *Macropus dorsalis*.

Pale yellowish-white; head tawny yellow, darker anteriorly; clypeus semilunar; palpi long and slightly clavate; antennæ with last joint produced to a blunt point and flattened posteriorly; temporal angles broad and truncate; eyes slightly convex; base convex; prothorax elliptical, truncate anteriorly and rotundate posteriorly, slightly broader than long; metathorax sub-conical and truncate; legs, a chestnut ring on distal femur and tibia, second tarsal joint has several transverse rows of small hairs inferiorly; abdomen ovate, bluntly serrated laterally. Length 1.18 mm., breadth .60.

Genus.—*LATUMCEPHALUM*.

Generic characters:—Head broader than long, three divisions on lateral margins; eyes small; palpi apparently two-jointed, but in reality four-jointed, first very short and fourth and fifth welded together; antennæ four-jointed; abdomen deeply serrated laterally; tarsal joints nearly equal in size; two ungues.

4. *LATUMCEPHALUM MACROPUS*.

Colour whitish; head flattened, cone-shaped, with three depressions or slits on the lateral margins, about one and a half times as broad as long, with truncate basal angles and sinuously concave base; chestnut markings round basal margins and on the inner side of a wide, shallow sinus which holds the antennæ; clypeus narrow and semilunar; palpi exerted, four-jointed, first very short, second long and cylindrical, fourth and fifth clavate and welded together; antennæ stout and capitate, first joint semi-cylindrical, second globular, third pedunculate, and fourth semi-globular; prothorax transversely elliptical, slightly concave anteriorly and convex posteriorly, lateral angle acute; metathorax somewhat quadrate, concave anteriorly and convex posteriorly, with depression in each lateral margin; legs robust, first tarsal joint a little smaller than the second; abdomen oval, nine segments, bluntly and deeply serrated laterally. Length 1.15 mm., breadth .44 mm. Found on the skin of the Wallabies. Feeds on epidermis. Rather sluggish in movements.

EXPLANATION OF PLATE.

- | | |
|--------------------------------------|---|
| 1.— <i>Boopia nota-fusca</i> (male). | 4.— <i>Latumcephalum macropus</i> (female). |
| 2.— <i>B. bettongia</i> (male). | 4A.—Do do—palpi. |
| 3.— <i>B. minuta</i> (female). | |

RECENT PUBLICATIONS.

“CATALOGUE OF NESTS AND EGGS OF BIRDS FOUND BREEDING IN AUSTRALIA AND TASMANIA.”—The second part of this publication, the general plan of which was given in the *Victorian Naturalist*, vol. xvii., p. 66, has recently been issued. The